

Table of contents:

Safety Cautions	1
Data Security	1
Safe Usage Guidelines	2
Electromagnetic Compatibility	3
Battery Handling	3
Cleaning	4
Legal caution:	4
WMA Audio Format	5
Medioplayer Settings:	5
System requirements	4
What's in the Box?	6
Product Overview	7
Getting Started	9
Charging the MP3 Jukebox	9
Operation	11
Switching On/Off	11
Start the Menu	11
Connecting the Earphones	12
Reproduction	12
Recording	13
Resetting the MP3 Jukebox (Reset)	13
Menu Structure	14
Setting Preferences	15
Connecting to a PC	16
Installing the Driver and Application	17

Using Audiophile	18
To download files to your MP3 player:.....	18
To upload files to your PC system.....	18
To update firmware	19
To change startup picture	19
To rebuild your database.....	19
Playing & Organizing Music.....	22
Play Lists and List Manager	22
Search Songs	23
Segment Repeat	24
Equalizer Settings	24
Playback Options.....	24
Playlists	25
Dragging and Dropping Music Files	26
Recording Music and Voice	26
External Storage Device.....	28
FAQ, Tips and Troubleshooting	29
Is Further Assistance Necessary?	32

SAFETY CAUTIONS

We recommend that you read this chapter completely and with care and follow the instructions detailed. In doing this, the correct functioning and the long duration of the MP3 Jukebox are ensured. Please keep these instructions somewhere safe in order to be able to hand them to a new owner in any eventual case of sale.

In case of any problems, address exclusively to your local authorised service centre.

Data Security



You must guard against the loss of your important data by making backup copies. You can backup your data onto CDR, CDRW, floppy disk, USB memory drive or other media such as ZIP drives. It depends upon how much data you want to backup. IF you do this and something happens to the hard drive in your computer, you have another copy of your data. We do not assume liability for any data loss or damage to data storage units, and no claims can be accepted for damages resulting from the loss of data or any consequential losses.

Safe Usage Guidelines

- ▶ Keep the product away from **damp**, protect it from **jolts, dust and heat** and do not expose it to **direct sunlight**, in order to avoid any operational problems.
- ▶ **Attention:** The MP3 Jukebox has a built-in hard disk. Do **not** allow the device to **be dropped** and avoid **vibrations**, in order to avoid damage.
- ▶ Do not open the product casing: this would cause the forfeit of the guarantee and the eventual damage/destruction of the product.
- ▶ Do not allow **children** to play with electrical products without the **supervision of an adult**: children are not able to evaluate any possible and real dangers.
- ▶ After transportation of the product, wait until there is a suitable environmental temperature before putting it into operation. In case of significant thermal variations or damp, it is possible that the forming of condensation can occur which can cause short circuits. Before transportation, replace the cover of the USB socket.
- ▶ Use only the USB Cable **supplied with the product**.
- ▶ The product supplied is intended to be used only with computers equipped with power surge protection. (Limited Power Source according to EN60950).
- ▶ **Attention!** There is a chargeable battery in the device. Batteries and accumulators should not be put into the domestic waste. They will be taken back free of charge by the manufacturer, the dealer or another responsible agency, to conduct them to recycling or disposal.

Electromagnetic Compatibility

- ▶ When you use the product, **follow the directives** on electromagnetic compatibility (EMV). To avoid the risk of damage and the loss of onboard data, position the device at least one meter from high frequency and magnetic sources of interference (TV, stereo loud-speakers, mobile phones, etc.)

Battery Handling

Batteries may contain combustible materials. Misusing them may cause battery leakage, heat, explosion or ignition, bringing about injury or damage to the product or YOU. Please observe strictly the following:

- ▶ **KEEP CHILDREN AWAY** from batteries.
- ▶ If by any chance, batteries are swallowed, consult a medical doctor immediately.
- ▶ **DO NOT CHARGE** batteries (except rechargeable batteries).
- ▶ **DO NOT FORCIBLY DISCHARGE** batteries.
- ▶ **DO NOT SHORT-CIRCUIT** batteries.
- ▶ **DO NOT HEAT** or **DISPOSE OF IN FIRE**.
- ▶ **DO NOT DISASSEMBLE** or **DEFORM** batteries. Your hands and fingers may be injured, or the liquid of the battery may get into your eyes or adhere to your skin. If this happens, rinse with a large quantity of water immediately and consult a medical doctor.
- ▶ **DO NOT** expose batteries to strong impacts by dropping or throwing the batteries.
- ▶ **DO NOT** reverse the positive (+) and negative (-) terminals to avoid short-circuit.
- ▶ **REMOVE PROMPTLY** any used battery from the device.
- ▶ **REPLACE THE BATTERY** with a new battery of the same type.

- ▶ **INSULATE THE TERMINAL** parts with tape or the like when storing or at disposal of the batteries.

DO NOT throw drained batteries in with the domestic rubbish!

Respect the environment and dispose of them in the specific containers for separate collection. If necessary, turn to your reseller or to our service centre. Thank you!

Cleaning

Generally, the equipment does not need to be cleaned.

- ▶ **Caution! The product does not contain components that need to be maintained or cleaned.**

Be careful that the product does not get dirty. Do not use any **solvents** or **spray corrosive cleansers**. If absolutely necessary, clean the product casing with a damp cloth.

System requirements

Connection	USB 1.1 / 2.0 (recommended)
CD-ROM	(for installation)
Operating System	Microsoft Windows® 98SE / ME Microsoft Windows® 2000 / XP
Driver	Only required for Windows® 98SE

Legal caution:

The MP3 Jukebox can only be used to copy or encode music tracks of which the user owns the copyright(s) or for which he has purchased or has been given the right of use from the holder of the copyright.

Any user who violates these rights is prosecutable according to the laws and/or subject to claims from the holder of the rights.

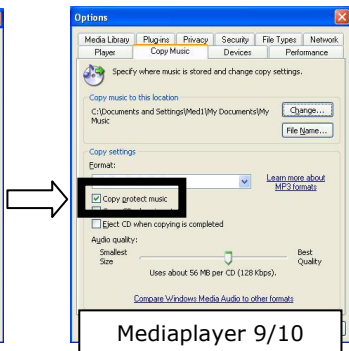
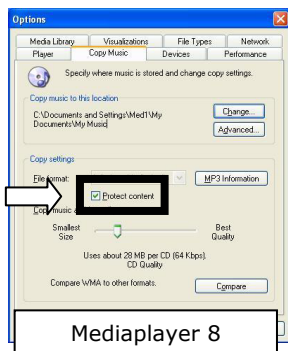
WMA Audio Format

Your MP3 Jukebox can also play back files in the WMA format. Some WMA encoders can use DRM (Digital Rights Management) and thus prevent playback on portable devices.

Use the Windows Media Player from Version 7.0, because it contains a function for rerecording music files on portable devices. Then, it will be possible to reproduce the WMA files created in this way on your MP3 Jukebox.

Medioplayer Settings:

When using the Windows® Medioplayer® make sure this option is **disabled** in order to play back the converted files on your MP3-Player:



WHAT'S IN THE BOX?

Please check the below listed parts and accessories are in the box when you first unpack your product. In the case of any missing item(s) please contact your local service centre accordingly. Any claim for missing parts will only be accepted within 7 days from date of purchase. Included in your product box is the following:

MP3 Player

USB computer connection cable

Stereo Earphones

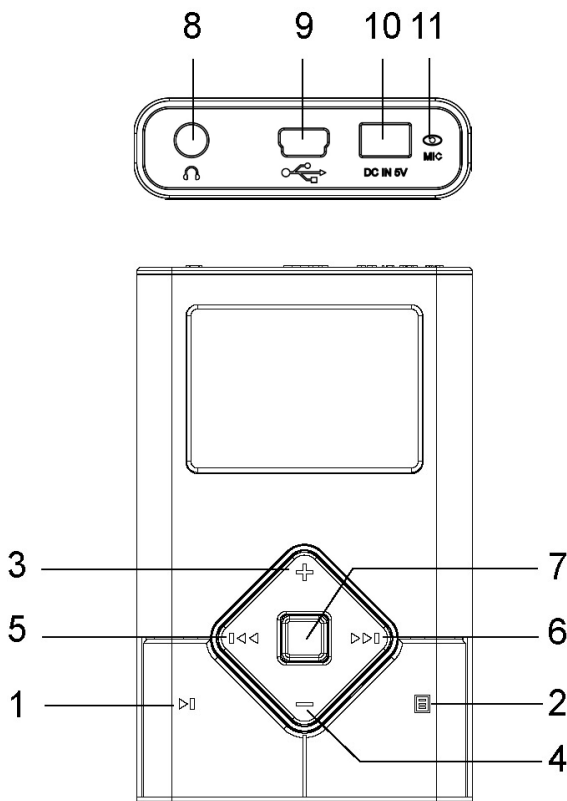
Application CD-ROM with Windows® 98SE Driver

AC Adapter DSA-0101F-05 UK

Line-in cable

This user manual

PRODUCT OVERVIEW

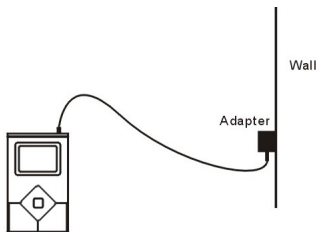


No.	Description
1	ON/OFF, Start, Pause, Stop [▶]
2	Menu key [■]
3	Page up / Volume up key [⊕]
4	Page down / Volume down key [−]
5	Previous Track [⏮] / FRW
6	Next Track [⏭] / FFW
7	Confirmation key (OK)
8	Stereo Earphones- [🎧] / Audio Out (Stereo) / LINE-IN
9	USB 1.1/2.0 Socket
10	AC-Adapter Connector
11	Microphone



GETTING STARTED

Charging the MP3 Jukebox

Connect the MP3 Jukebox to the supplied AC adapter. The Li-polymer battery is 80% charged in 2 hours and fully charged in 4 hours:



The battery symbol on the display shows the battery state:


Display	Remark
	Battery is fully loaded.
	Battery is almost empty.

► **Note:** You can use the MP3 Jukebox during the charging process.

OPERATION

Switching On/Off


Press the Playback/Pause button [1] for two seconds, to switch the MP3 Jukebox on.

Select the  (Switch Off) option in the Main Menu, to switch the MP3 Jukebox off again. The device will switch itself off if you stop playback and press the Playback/Pause button for 3 seconds.

The device will then switch itself off automatically.

Start the Menu

You start the Menu to change the operating mode and the basic settings in this way: The Menu is displayed when you switch the MP3 Jukebox on. The Menu is faded out when you start playback. Proceed in this way to display the Menu during playback:

1. Press the  button [2], to reach the Menu mode. The Menu will be faded out again if you do not make any further selection for longer than three seconds.
2. Operate the buttons [3,4,5,6], to select a Menu Point. The Menu Point selected will be shown at the lower edge of the display.
3. Confirm the selection by pressing the selection button (OK) [7].
4. Press the Menu button to leave a submenu. You reach a higher level of the Menu in this way.

Connecting the Earphones

Stereo earphones are included.

Insert the earphone plug into one of the appropriate sockets [8] of your MP3 Player. Either socket can be used.



Caution: Listening to music at a very high volume can cause permanent damage to your hearing. Before starting playback, adjust the volume to the lowest level, then start the playback and adjust the volume to the desired level.

Reproduction

You will read how you can transfer files to your MP3 Jukebox from Page ...

Playback

Press the Playback/Pause button [▶ || , 1] briefly, to play a number back when the MP3 Jukebox is switched on.

Pause

Press the button [▶ || , 1] briefly, to stop playback at the position that has just played back. Press the button again to continue playback.

Stop

Press the button [▶ || , 1] for longer than 1 second, to end the playback of the number completely. The number will start from the beginning if you operate the Playback button again.

Select a Number


You will select the previous or the next number with the help of the replay [◀, 6] and forward [▶, 5] buttons. The number will be wound forwards or backwards quickly, if you press the button down longer.

Recording

You can record from any audio source with this function.

1. Connect the music source with the headphones connection of your MP3 Jukebox [8], to record from an external source.

You can use a recording cable complying with your audio source (optional, e.g. 3.5 mm stereo to Cinch) to do this. The input of the MP3 Jukebox is designed to accept external sources such as CD or DVD players.

2. Select the Recording option  in the Main Menu. Now, decide whether you want to record with the installed microphone or the connected cable:



(Microphone)



(Line In)

3. Confirm the start of recording with **OK**. Press the button again to stop or terminate the process, or to adjust the volume.
4. Now, you will be able to start a new recording, play the recording back or delete it:



Resetting the MP3 Jukebox (Reset)

It can happen that it is no longer possible to operate the MP3 Player because of unforeseeable operating combinations or defective data exchange. Then, proceed as follows.

1. Remove all connection cables, if necessary.
2. Press the buttons [1,2,7] at the same time.

Menu Structure

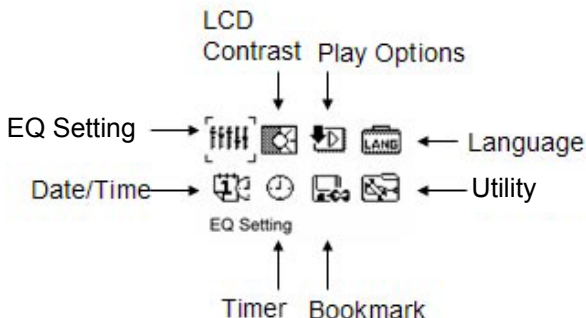
You will see an overview of the Menu functions of the MP3 Jukebox on the following pages. From the main menu, you can choose among the following options:



- Play Music – find your digital music files
- Record – voice and line-in record
- Settings – EQ, playback, language, and other settings
- Information – Status of player

Setting Preferences

You can customize the MP3 JUKEBOX's settings to fit your individual style.



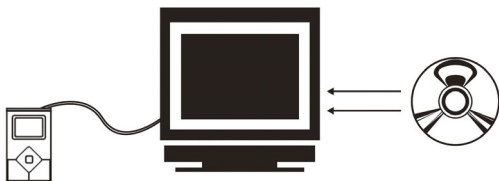
From the Menu, you may choose from the following options:

- Preset EQ and custom defined EQ
- Change LCD contrast
- Playback options
- Display language (both menu and song language)
- Set date and time
- Define various timer events
- Define Bookmark (excellent for Audio books)
- Other utilities
- Record quality (64kbps – 192kbps).
- CD Sync (0-5s) "Preferences" and the setting you wish to customize

***Note:** The Language setting includes options for both Music Information and Menu language.

Connecting to a PC

The MP3 Jukebox must be connected to your computer in order to install the driver and application software, and to transfer songs. Use the supplied USB 2.0 cable to connect the MP3 Jukebox to your computer's USB port.



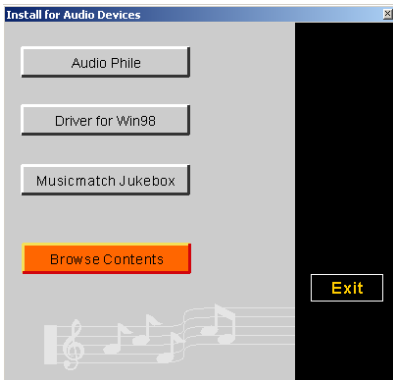
***Note:** Do not disconnect the MP3 Jukebox while music is being transferred. When the progress indicator on the MP3 Jukebox disappears, then it is safe to disconnect.



Caution! During the installation of the software it is possible that some important files are overwritten or modified. To have access to the original files in case of problems that arise after installation, it is advisable to create a back-up of the hard disk contents.

Installing the Driver and Application

The driver CD comes with drivers and plug-ins to ensure a smooth experience. Depending on your computer's operating system, the CD will install the driver and/or plug-in for Microsoft's Windows Media Device Management platform.



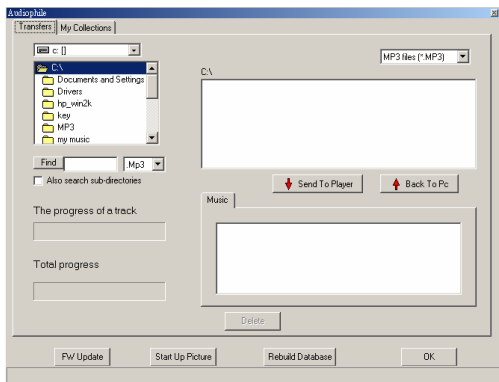
1. Click HDD Jukebox to install.
2. The Jukebox Management Tool Setup welcome screen will appear, click on Next to begin. Follow the instructions to continue installation. After Windows is done installing the drivers and/or plug-ins, the Jukebox Management Tool dialog box appears on your desktop.

The Jukebox Management Tool (Audiophile) is a program that enables you to easily upload/download music to the MP3 JUKEBOX, as well as edit ID3 tag information, and run other maintenance utilities.

The computer will detect the Jukebox as a new device. If the computer does not detect the MP3 JUKEBOX as a new device, reboot your computer.

Using Audiophile

Make sure the MP3 JUKEBOX is properly connected to the USB port using the supplied USB cable, then double-click the audiophile.exe icon to launch the music management functions window:



Click on the Transfer tab to access the following features:

- Transfer songs to/from player
- Upgrade firmware
- Change the startup picture
- Rebuild database (only if instructed to do so)

To download files to your MP3 player:

1. Select the directory with your MP3 or WMA files
2. Select the files to be transferred
3. Click Send to Player

To upload files to your PC system

1. Select the music file(s) stored in the Music tab
2. Click the Back to PC button

To update firmware

1. Click the F/W Update button
2. Select the directory containing the updated firmware file
3. Select the firmware file
4. Click OK

***Note:** After upgrading the firmware, disconnect the MP3 JUKEBOX from your computer and power on. The unit will then upgrade itself. It is very important that you do not interrupt this process. When the process is done, the player will shut off. Power on again to return to normal operations.

To change startup picture

1. Click the Startup Picture button
2. Select the picture you want to import (Please makes sure it is in black and white 160 X 160 pixels .bmp format)
3. Click OK

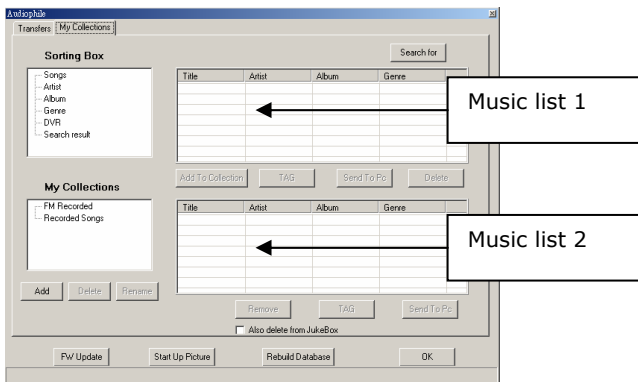
To rebuild your database

1. Click on "Rebuild Database"

***Note:** Rebuilding the database will case all music file(s) located in the My Collections box to be removed. You should only rebuild the database if necessary, and as infrequently as possible.

Click on the **My Collection** tab to do the following:

- Easily manage or reorganize your music files
- Search for specific songs
- Create/remove/rename playlists



Click on the **Sorting box** to access the following functions:

- Click the TAG button to edit the ID3 Tag information, including title, album, artist and genre for the selected song.
- Click the Delete button to delete the specified song.
- Click the Add to Collection button to add your favourite song to your appointed folder listed in the My Collection box.
- Click the Send to PC button to upload the selected song to your computer

Click the Search For button to fill in title, artist or album to search and then the desired songs will be shown in the music list 1, next to sorting box.

Note: you also can use "Conditional search" to search. That is, Selecting "" as the character can replace any other ones while searching.

In the Sorting Box, each item only has one folder. However, the item Artist might have multiple layers if the artist has more than one Album.

Choose the item shown in the My Collections box

- Click the TAG button to edit the ID3 Tag information, including the title, album, artist, and genre for the selected song.
- Click the Remove button to delete the selected song from the music list
- Click the Add button to add a new playlist folder
- Click Delete button to remove a playlist folder
- Click the Rename button to change the folder name

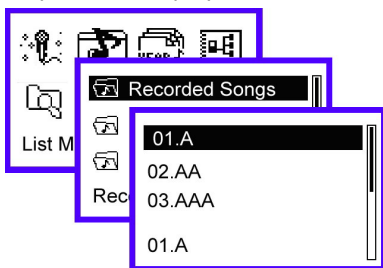
Playing & Organizing Music

The MP3 JUKEBOX allows you to create your own listening experience by allowing you to categorize songs by Artist, Album, Year, or Genre. You can also search songs by title and compile playlists of your favourite songs.



Play Lists and List Manager

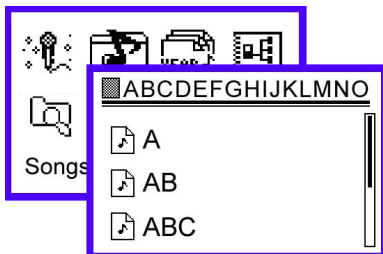
You can play individual songs from your predefined play-lists, or play an entire playlist. Just select Play List and choose the list you want to play.



To manage your list, select List Manager and add/delete songs to each playlist.

Search Songs

You can search for songs by Title under the "Songs" sub-menu.



After locating the first character of the song, press OK. Then use the Up/Down keys to find the desired song. Press OK to play.

While playing a song, the MP3 JUKEBOX displays the following:



ID3

0:03:53



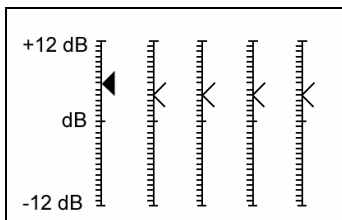
From the Now Playing menu, you can access the submenu by pressing OK. This allows you to define segment repeat, EQ, playback mode, or adjust playback speed.

Segment Repeat

To repeat a segment, press OK twice to define the starting point in the song. Then press OK again to define the end point. Press OK again to return to normal operations.

Equalizer Settings

To adjust the built-in Equalizer, press OK to enter the Utilities menu. You may choose from several preset Equalizer settings, or define your own custom EQ. To define the custom EQ, select Genre.



Press Up/Down to define each band and then FF/REW to move to different frequency bands. Press MENU to return to previous menu.

Playback Options

To change playback options, press OK to enter the Utility menu. You can change the playback format to sequential, repeat, repeat all, random, or random-repeat.

To change the playback speed, press OK to enter Utilities menu. You can then change the speed by pressing OK. A higher number represents a slower playback setting.

Playlists

With the MP3 JUKEBOX, you can import playlists using Audiophile (see Using Audiophile) or dynamically create playlists on the go.



To select a playlist, simply choose Play My Music and then select Play Lists.

To create, delete, edit, or rename a playlist on the player, simply select List Manager.



Dragging and Dropping Music Files

With the MP3 JUKEBOX, you can import your entire music library using Windows drag and drop functionality without the need for any 3rd party software.

However, this method is not recommended for all users because it prevents indexing songs by Artist, Album, etc.

You can import any number of folders to the MP3 JUKEBOX, but the subdirectory is limited to 5 levels deep.

Recording Music and Voice

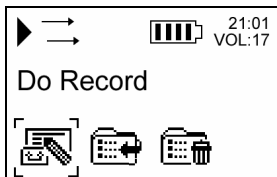
The MP3 JUKEBOX can be used to make voice recordings and record music from a secondary source such as a CD player or stereo.

Voice Recording

Your MP3 JUKEBOX comes equipped with a built-in microphone. To start, simply select Record and then Voice Recording.



Press OK to start the recording.

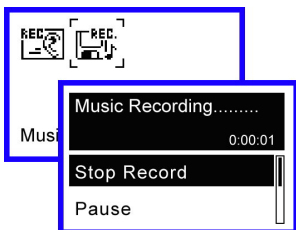


After selecting Do Record, you can pause and resume recording at any time. When you are done, press Stop Record. Press MENU to return to previous menu.



Line-in Recording (Encoding)

To record audio from external source, plug the supplied line-in cable into both the MP3 JUKEBOX and the audio source (CD).



You can pause and resume recording at any time. When you are done, press Stop Record. Press MENU to return to previous menu.

*Note: In the Preferences menu, you can select the recording quality.

External Storage Device

The MP3 JUKEBOX can be used as an external storage device for easily transporting or backing up important files.

First, connect the MP3 JUKEBOX to your PC's USB port with the supplied USB cable. Then click on the My Computer icon and locate the new removable drive labeled as " E " or " F ", etc.



You can now drag and drop any file to or from the MP3 JUKEBOX.

***Note:** If you are using windows 98SE and don't see the new icon, please remove Audiophile from your system and reinstall the driver again.

While connected to the computer, the MP3 JUKEBOX's buttons are inactive. If you are using a notebook PC without A/C power, please plug the A/C adapter into the MP3 JUKEBOX to ensure the smoothest operations.

FAQ, TIPS AND TROUBLESHOOTING

1. What are the differences between MP3 and WMA?

- MP3 / WMA format files are both compressed digital audio files, which consumers can listen to with near CD quality. WMA format offer nearly CD quality music in a smaller file size than MP3. That mean you can increase the number of music files in WMA format compared to MP3 format.

2. How to solve the compatibility issue between Windows OS in English version and filename in non-English.

- If the language versions between your Windows OS and filename are different, you may get some abnormal character display. If the above happen under Win2000 or Win XP, you need to adopt the following steps to solve this problem.
Click My Computer/Control panel/Regional options to go into the Regional options setting. Click the "General" tag and hit the "Set default..." button to choose language.
The Windows OS will pop up a "Select System Locale" window. Click the drop-down list to select the language version which your filename is made in and then press "OK" button to finish the whole setting.
The windows OS will pop up "General window" information box and just hit "yes" to pass it.

3. Why can't the PC detect the player as a removal device after connecting player to PC?

- Make sure you have turned the player on.
Make sure USB cable has been connected properly between PC and Player.
You have to install driver under Win98/ME.

4. How to upgrade firmware

- Open Audiophile.exe and then click the "F/W update" button. Look up the folder in which your firmware upgrade file is located, select and open the specified file.
Once the update is complete, remove the MP3 JUKEBOX from the USB port and power on.
The firmware upgrade progress bar will show up, and then show the progress status of firmware upgrade.
The player will automatically power off when the firmware upgrade is finished.
Restart the player to enjoy your music.

5. What operating systems work with the Player?

- The player support Win98SE/ME/2000/XP. It will not work on Win95 or NT

6. Does the player support Mac OS?

- If you use the player as the removable drive, the player will work well with Mac OS 9.04 or above.
If you play music with the player, please note the following limits:
The audiophile, music management software, can't work with Mac system. Only under Mac OS 9.2 system, you can drag and drop your music files from/to the MYMUSIC folder of the player.

7. Why can't Audiophile recognize the player after I format the player?

- After you finish formatting, be sure to turn the player on, connect it to the PC and then click the Audiophile.exe.

8. How to download music to the MP3 JUKEBOX?

- You can use Audiophile or just drag and drop music file to the default folder, MY MUSIC, or any folder you make under MY MUSIC directory.

9. What kind of files does the player support?

- If you use it as a removable device, it works like any hard drive and you can store any files to it. If you use it as a digital audio player, it supports MP3, WMA, and OGG.

10. How to reset / The MP3 Jukebox does not respond to my commands.

- Please press the "Sel", "Menu", and "Play" buttons at the same time. Do not use unless the player freezes.

11. Files that have been copied through my file manager or my desktop , multimedia program (Musicmatch, Windows Media Player) can't be found on the MP3 Jukebox.

- Copy the files to the directory MY MUSIC. Re-build the database afterwards. Only files copied through **Audiophile** are inserted into the database automatically.

12. In the MP3 Player, the files are not shown correctly:

- The MP3 Player does **not** display the name of the file but its own coded information with an ID tag. This information can be modified with special programs (not included).

Is Further Assistance Necessary?

If the suggestions listed above are not enough to resolve the problem, then contact us. The following information will help us to help you resolve your problem:

- Configuration of the computer
- Any additional peripherals you may have connected
- Any messages that appear on the MP3 Player display
- Any Windows programs that were being used when the problem arose
- Solutions you have tried to resolve the problem
- If you have a customer code, please have it ready before you call.

Warranty

PLEASE READ THIS LIMITED WARRANTY CAREFULLY TO UNDERSTAND YOUR RIGHTS AND OBLIGATIONS.

The sales receipt is considered valid proof of purchase and should be kept in a safe place. This receipt will be required for receiving any warranty service. This warranty is transferable. When transferring ownership to a third party, please provide the receipt and warranty information. Our company warrants to the end user that each product, including related software, accessories, media and supplies, shall be free from defects in materials and workmanship for thirty six months from date of purchase. This warranty covers only those defects that arise as a result of normal use of the product. This warranty does not cover any other problems, including problems that arise as a result of improper maintenance or modification; software, accessories, media or supplies not provided or supported by the supplier; or operation outside the manufacturer's specifications.

Any part of this device repaired or exchanged by a valid service representative will be covered under the original warranty period. Back up all programs and data before shipping this device for repair under the warranty agreement. Do not leave any media in the disk drives. Products shipped without accessories will be returned without accessories. Any replacement product or component may be either new or like new, provided that it's functionality is at least equal to that of the product being replaced.

Limitation of Warranty

To the extent allowed by local law, no other warranties are made with respect to this personal computer or the warranty services by any person, including but not limited to our company and its suppliers. The express warranty stated above is the only express warranty made to you and is provided in lieu of all other express or implied warranties and conditions (if any) including any created by any other documentation or packaging. For additional warranty information, please refer to the included warranty card.

Limits of Liability

To the extent allowed by local law, except for the obligations specifically set forth in this warranty statement, in no event shall the company or its third party suppliers be liable for direct, indirect, special, incidental, or consequential damage, whether based on contract or any other legal theory and whether advised of the possibility of such damages. This includes loss or damage of personal data on your computer.

Local Law

This warranty statement gives you legal rights. You may also have other rights that vary from jurisdiction to jurisdiction. To the extent this warranty statement is inconsistent with local law, certain disclaimers and limitations of this statement may not apply to the customer.

Making Copies of This Manual

This manual contains information protected by law. All rights are reserved. Copyright law prohibits duplicating this information in mechanical, electronic, or any other form, without the written approval of the manufacturer.

© 2005, all rights reserved.

The copyright is kept c/o the company **MEDION®**.

Trademark:

MS-DOS® and **Windows®** are **Microsoft®** registered trademarks.

All the other trademarks are of the property of their respective owners.

Except the rights for making technical and aesthetic modifications and any possible typing errors.